



**Heather Moyer**  
 5385 State Route 6  
 Tunkhannock, PA 18657  
 Phone: 570-836-6199  
 Website: [www.bkvcorp.com](http://www.bkvcorp.com)

## ABOUT BKV

BKV Operating, LLC (BKV) is a forward thinking, growth driven, vertically integrated energy company that seeks to deliver low impact, sustainable energy to the community. BKV is one of the top 20 gas-weighted natural gas producers in the United States. BKV Operating, LLC is committed to safety, and dedicated to educating communities on pipelines and how to avoid pipeline accidents. We want to work together; just to be on the safe side.

## WHAT DOES BKV DO IF A LEAK OCCURS?

To prepare for the event of a leak, personnel regularly communicate, plan and train with local emergency responders. Upon the notification of an incident or leak, BKV will immediately dispatch trained personnel to assist emergency responders. BKV personnel and emergency responders are trained to protect life, property and facilities in the case of an emergency. BKV personnel will take steps to minimize the amount that leaks out and to minimize the impact to the surrounding community.



## MAINTAINING SAFETY AND INTEGRITY OF PIPELINES

BKV invests significant time and capital maintaining the quality and integrity of their systems. BKV also utilizes ground and/or aerial surveillance patrolling to identify potential dangers. Field personnel are immediately notified if there is a possibility of a leak. System valves can be utilized to isolate a leak.

## HOW TO GET ADDITIONAL INFORMATION

For more information about BKV's pipelines, please contact us at 570-836-6199 or visit our website at [www.bkvcorp.com](http://www.bkvcorp.com) or email us at [info@bkvcorp.com](mailto:info@bkvcorp.com).

### EMERGENCY CONTACT:

**1-570-240-9060**

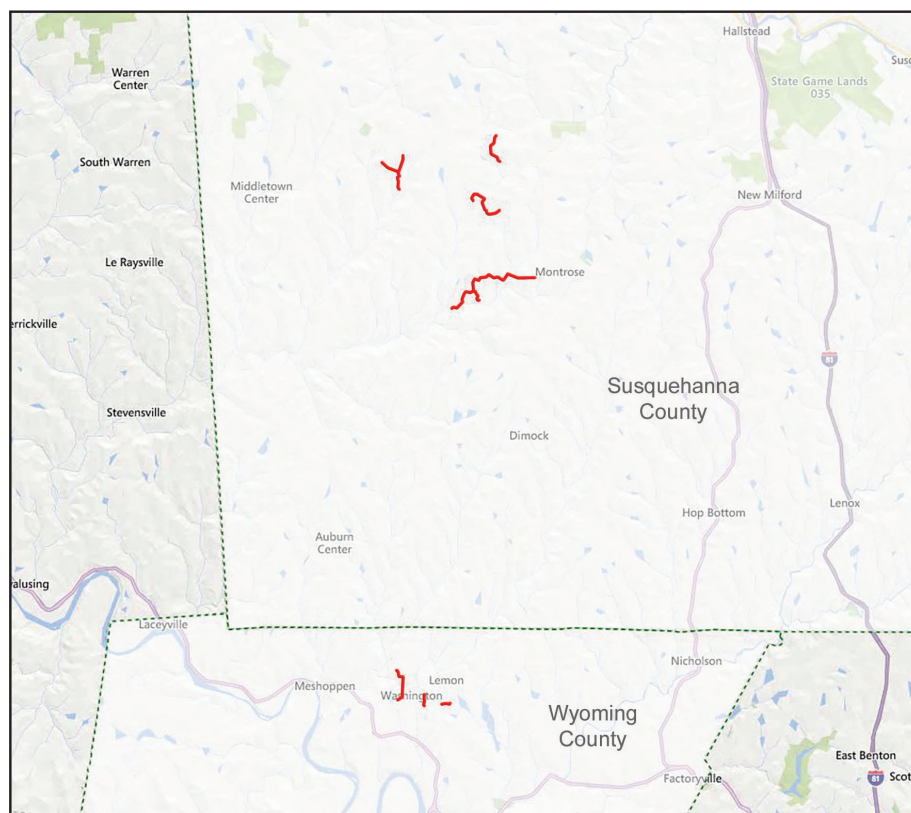
### PRODUCTS/DOT GUIDEBOOK ID#/GUIDE#:

Natural Gas	1971	115
-------------	------	-----

### PENNSYLVANIA COUNTIES OF OPERATION:

Susquehanna	Wyoming
-------------	---------

*Changes may occur. Contact the operator to discuss their pipeline systems and areas of operation.*



Susquehanna county is comprised of approximately 12 miles of 6", 8" and 10" natural gas gathering pipelines operating at 500#. Wyoming county is comprised of approximately 3 miles of 8" and 10" natural gas gathering pipelines operating at 1200#.